

**April 24, 2011**

*To Follow Jesus Christ as Lord and Savior,  
Be Filled with His Love and  
Share His Abundant Grace with our Communities.*

## Welcome Visitors & Friends!

**We are glad** you are here and hope you have met God and some new friends. Stop by the Welcome Center for information about the ministries and opportunities for you here at Faith! Be sure to check out our website at [www.faithpres.org](http://www.faithpres.org).

**Attendance Pads:** Please sign and pass the attendance pads during Life of the Church. This information is important to indicate trends in attendance and inform us if there are visitors to our Faith Community, so we may welcome them.

**Hearing devices** are available to be borrowed for use during the service. A special system is set up in the sanctuary that amplifies the sound through the ear piece. You can even use it if you have a hearing aid – it fits right over it. You can pick one up at the Information Desk and return it after the service.

**Usher Volunteers** are Captain Bill Smetana; Dave and Jan Dale, Shirley Greenfield, Gene and Joyce Rowan; Gary Hemphill & Boyd Wasson, Co-Chairmen, Usher Scheduling.

**Greeter Volunteers** are Carol Hemphill, Kathy Melchert, John and Kay Parks.

## Today at Faith

**Worship times 9:00 & 10:30 am in the Sanctuary**

**Today! NO Sunday School! 9:00 am and 10:30 am Celebration Worship services.** We welcome families to worship with their children. A nursery is available for children 5 years old and younger for those who need that option.



### Today's Special Events:

- ◆ Pancake Breakfast 8:00-10:30 am
- ◆ 9:00 am Celebration Worship
- ◆ 10:30 am Celebration Worship

**Lenten Offering 2011:** This year the Lenten Offering will be split between the **Japan Earthquake and Tsunami Relief** with Presbyterian Disaster Assistance and Daystar graduate, William Eyika, to help fund his school, the **Dagoretti Corner Self Help Group of Nairobi Kenya**. Envelopes are included in the bulletin today.

**The May Issue of FIA** will be available today. Be sure to pick up your copy in the **Atrium** on your way to Easter Pancake Breakfast! Visitors are welcome to take a copy too!



## Faith Prays

- **Tillie Dolejsi** at Beacon Hill Hospice Care
- **Iris St. Lawrence** at Methodist Hospital
- **Eldon Hiebert** at Chapel View
- **Jane Hansen** at Chapel View
- **Sherry Neiberger** at McKenna Crossing
- **Maxine Rieman** at Chapel View
- **Pastoral Hospitalizations or Visits:** Margaret, Church Office 952-935-4481 x 10
- **Prayer Requests:** Please fill out a prayer request card or contact Carol Shanholtzer at 952-545-4303 shanh@mac.com.

(Information for **Faith Prays** is current through Tuesday mornings at the time of publication.)

### Remember in prayer those ill or recovering:

Dorothy Bren, Bob Chase, Dan Olson, Daisy Peterson.

### The safety and care of all who currently serve in the armed forces:

Jackie Branscome\*, Chris Beyl, Jodie Brueske, Joel Campbell, Adam Dowd, Brian Knutson, Nate Koenig, Mike MacDonald\*, Amanda McGregor, David O'Keefe, Callea Pavelka, Ross Pavelka, Gary Slater, Gordon Sloan\*, Joe Tourand, Stephen Varverakis, Christopher Wilmot, Nicholas Worthy, Tim Young.

*\*serving in Iraq, Afghanistan or Africa*



## Events & Announcements

**Second Halfers** enjoy the Easter celebration today! We will resume sign-ups NEXT Sunday, April 24, for our adventure on **Wednesday, May 18**. We will travel to Osceola and board a train for a two hour ride, enjoying lunch while traveling high on the bluffs and viewing spring scenery. The cost per person is \$63. Questions? Call Annette Greer or Carolyn Larsen.

**West Metro Grief Support** Tuesdays 4:30-6:30 pm at Ridgewood Church, 4420 Cty. Road 101 S, Minnetonka.

♦ April 26 Lynn Dosch Stories Along the Way

**M.E.A.P./Wingate** educational grants for 2011, Applications must be received on or before May 1, 2011.

**Join us for "Work Thursdays"!** Men & Women! Teenagers! Kids! Come join your Buildings & Grounds Committee once a month for "**Work Thursdays**", beginning Thursday, April 28. We will gather at church from 5:00-8:00 pm usually on the **third Thursday** of each month except April, due to Holy Week. Join us for a few minutes, or join us for all 3 hours. Light refreshments will be served. This month's tasks include grounds clean-up, cutting up downed branches, water overflow diversion, electrical panel discernment, Sanctuary deep-cleaning, and more!

**FINDING FAITH: May 15, 11:15-12:00 pm** in room 114. Join us after worship (formerly "Get Acquainted Event").

- Informal conversation with the Pastor Buck
- First step toward membership at Faith
- Q & A discussion

## Adult Discipleship

**Wednesday Nights from 7:00-8:00 pm**

**Let's Pray with Pastor Buck Day!** Sanctuary 7:00 pm.

**New Men's Bible Study: 1 Corinthians with Max Lucado Study Guide** from 7:00-8:00 pm. Room 114.

**Thursday Nights from 7:00-8:30 pm**

**"Gripped by the Greatness of God."** Barbara Tenney and Sue Larson. Thursday evenings, 7:00-8:30 pm in Faith Hall.

**Sunday Mornings from 9:00-9:45 am**

**The Me I Want To Be**, Adult Study class will be offered from 9:00-9:45 am until May 15 (no class on Easter). Blake Meisenheimer. Room 114.

**Easter's Over - Now What?** Sunday, May 1 from 9:00-9:45 am in the Library as we look at our Christian role "in view of God's great mercy." (Romans 12:1). This one day class is open to everyone from high school students to adults of all ages (no materials required). Class by Debbie Knutson is part of her seminary teaching requirement. Your support is appreciated.

## Ministry Needs & Opportunities

**Loaves & Fishes:** We will serve tomorrow at Holy Rosary in Minneapolis. There are still a few jobs available, especially help with cleanup. The green signup board is in the Narthex. Jean Bloden.

**Feed My Starving Children:** Our next session is **Tuesday, May 10 at 6:00 pm**. For more details and to sign up, check out the clip board at the Information Desk. You can also find the link and "join code" on the Home page of the church website at [www.faithpres.org](http://www.faithpres.org) for on-line registration.

**Community Days of Service** is Saturday, May 21 and Sunday, May 22. Sign ups for projects begin next Sunday at Faith or sign up online at [www.cds2011.eventbrite.com](http://www.cds2011.eventbrite.com). There are projects for people of all ages broken down in sections of Saturday AM or PM and Sunday AM or PM. Pick a project that works best for your schedule. We will have a short blessing service instead of regular worship at 9:00 am on Sunday, May 22.

**Community Days of Service Needs YOU!** We need Captains for projects on May 21-22 C.D.S. weekend. Buck Day.

**Beyond Us Missions ~ Adult Mission Trip Dates Set!** The **Beyond Us Team** has scheduled two adult mission trips for this summer. We are partnering with Urban Homeworks for a local opportunity from July 19 – 22. The second opportunity is July 30 – August 6 in Paintsville, KY. Sign up now to reserve your spot! Brochures with more information are also available in the Information Hallway.

**Stephen Ministry** is one on one, confidential, Christ-Centered care available for anyone who is going through a difficult time. Linda Elliott 952-938-4791 or Craig Gustafson 952-933-1844.

## Family Ministries

**Spring Plant Sale:** Order forms are now available at the Youth table in the Narthex through today! Please support this youth fundraiser for the summer mission trip to Nashville. Pick up is Mother's Day, May 8.

## Church Office

**Weekly Bulletin Announcements:** Deadline for the bulletin is Monday at 5:00 pm. [margaret@faithpres.org](mailto:margaret@faithpres.org).

**Office Hours: Monday-Thursday 8:00-4:00 pm, Friday 8:00-12:00 noon.** Please note, there **will** be times during posted office hours that the office is not staffed. Please call ahead and make an appointment if you need assistance.

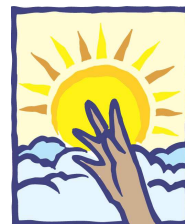
**Summer 2011 Faith in Action Deadline is MAY 1, 2011 for any summer news.** Please note, this issue covers the months of June, July and August. Email articles to Margaret. Thank you! [margaret@faithpres.org](mailto:margaret@faithpres.org)



**Aluminum Can Trailer:** Remember to save your aluminum cans and deposit them in the blue recycling bins near the main entrance, Atrium or the Can Trailer in the parking lot (*aluminum only*).



	Faith Offering		
	Received	Budget	Over(Short)
Last Week	\$ 13,617	\$ 10,645	\$ 2,972
YTD 2011	\$ 235,319	\$ 245,201	\$ (9,882)



**BEHOLD,**  
**CHRIST HAS RISEN!**



Upcoming Events			
4/24	Easter Sunday	5/13	Parents' Night Out
4/24	Pancake Breakfast	5/14	Men's Ministry Breakfast
4/25	Loaves & Fishes	5/15	Anthem Sunday
4/26	Session	5/15	Finding Faith / Pastor Buck
5/1	Senior Adult Sunday	5/17	Deacons
5/8	Mother's Day	5/18	Last Wednesday Night
5/8	Plant Sale pick up	5/21-22	Community Days of Service
5/10	Feed My Starving Children	5/24	Session
5/13	Senior Breakfast 90+ Guests	5/29	Memorial Sunday
		6/5	Graduation Sunday

<p><b>Sunday, April 24</b>  <b>Easter Sunday</b>  <b>Pancake Breakfast (8:00-10:30 am)</b>            9:00 am Celebration Worship            9:00 am Childcare            9:00 am NO Sunday School            10:30 am Celebration Worship</p> <p><b>Monday, April 25</b>            ISLA            Loaves &amp; Fishes            7:00 pm Sound of Music Rehearsal</p> <p><b>Tuesday, April 26</b>            ISLA            11:00 am Staff Meeting            11:00 am Hopkins Women's Luncheon            6:30 pm Renewal Group</p>	<p>7:00 pm Session            7:00 pm ISLA PTO Meeting</p> <p><b>Wednesday, April 27</b>            ISLA            9:15 am PMO            9:30 am Palette Club            6:30 pm LH, Focus, AQ            7:00 pm Men's Bible Study            7:00 pm Let's Pray with Pastor Buck            7:00 pm Adult Choir</p> <p><b>Thursday, April 28</b>            ISLA            5:00 pm B&amp;G Work Night            6:15 pm TOPS            7:00 pm Women's Bible Study            7:00 pm ISLA Spring Program</p>	<p><b>Friday, April 29</b>            ISLA</p> <p><b>Saturday, April 30</b></p> <p><b>Sunday, May 1</b>            Senior Adult Sunday            Communion Sunday            9:00 am <i>The Me I Want to Be Class</i>            9:00 am <i>Easter's Over, Now What Class</i>            9:00 am Childcare            9:00 am Sunday School            9:00 am Java n Jesus            10:00 am Celebration Worship            11:00 am Senior Adult Reception</p>
--	--	---

**Faith Presbyterian Church**  
**(952) 935-4481** [www.faithpres.org](http://www.faithpres.org)

Associate Pastor	Rev. Buck Day, ext. 16
Director of Music Ministries	Steve Zehr, ext. 17
Director of Family Ministries	Denny Burda, ext. 15
Student Ministry Associate	Kevin Boyle, ext. 22
Youth Worship Associate	Jimmy Barnett, ext. 12
Children's Ministry Associate	Joanna Bachmann, ext. 19
PMO Coordinator	Kathy terSteeg, ext. 14
Church Business Administrator	Rick Reed, ext. 20
Accountant	Rhonda Amon, ext. 11
Office Manager	Margaret Bauer, ext. 10